

专业铸品质 诚信赢未来



Shanghai Precision Dosing & Weighing System Co., Ltd.

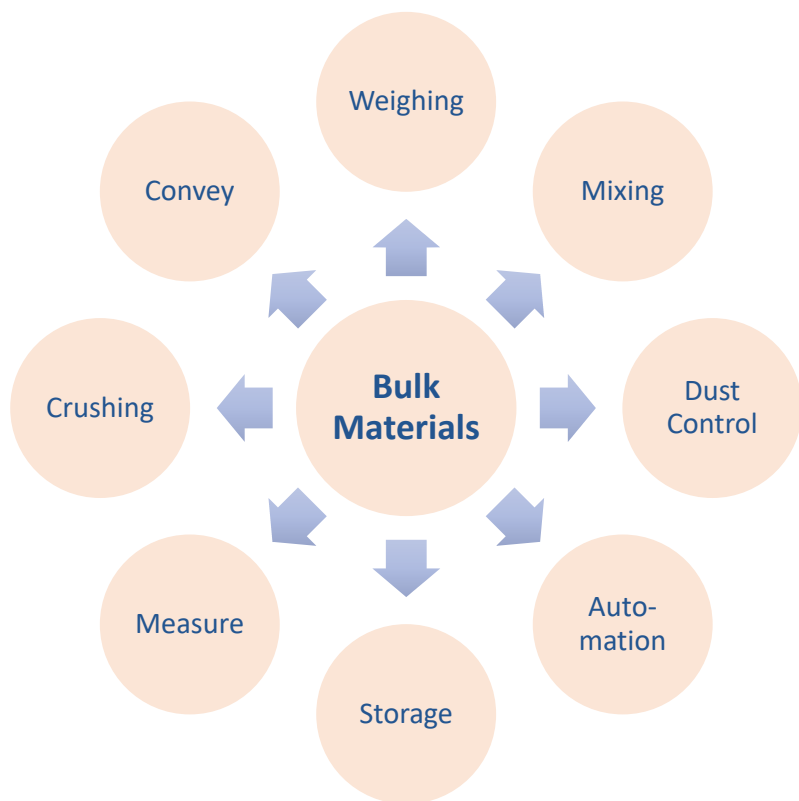
Glassmen 2025 Istanbul Turkey

15 May 2025





Shanghai Precision Dosing & Weighing Co., Ltd.



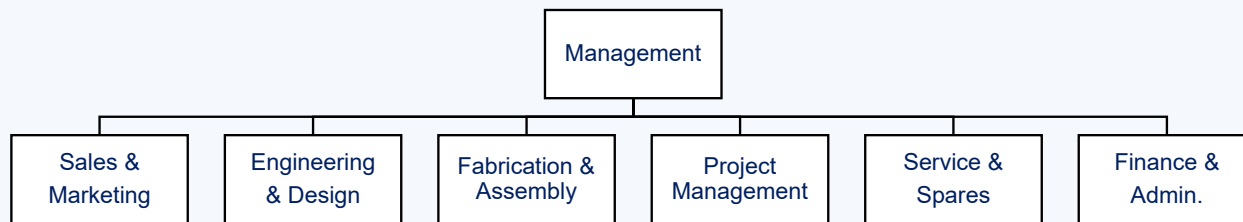
- **Core technology: Bulk Materials Handling**
- **Main business: Batch House & Cullet system** for glass industry

History

Shanghai Precision was founded since 2004 by Raute Precision Finland



1 Organization



2 Qualifications

ISO9001:2008 / ISO14001:2004 / OHSAS18001:2007

3 Patents





Shanghai Precision Dosing & Weighing Co., Ltd.



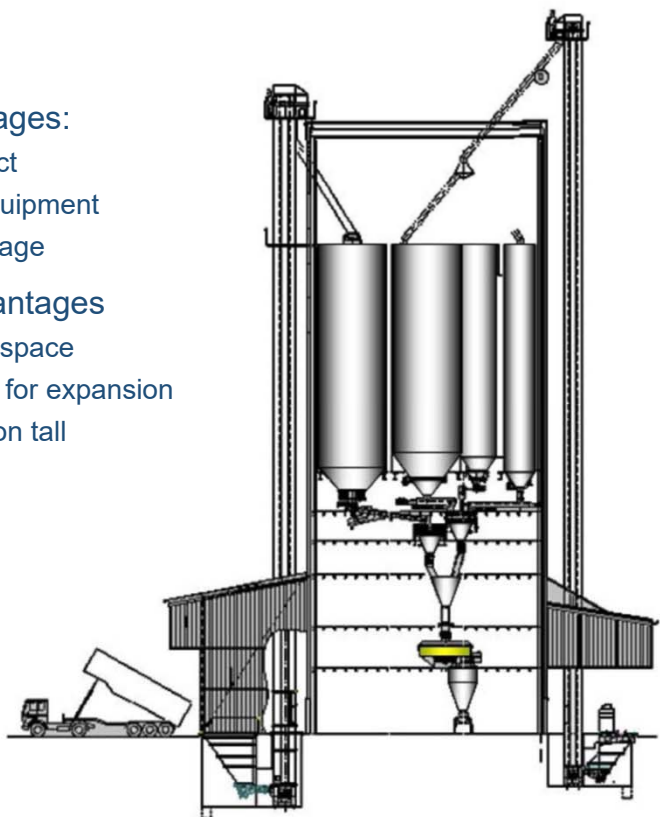
Q1 - Batch Plant – tower type or inline type?

◆ Advantages:

- compact
- less equipment
- no spillage

◆ Disadvantages

- limited space
- difficult for expansion
- elevation tall

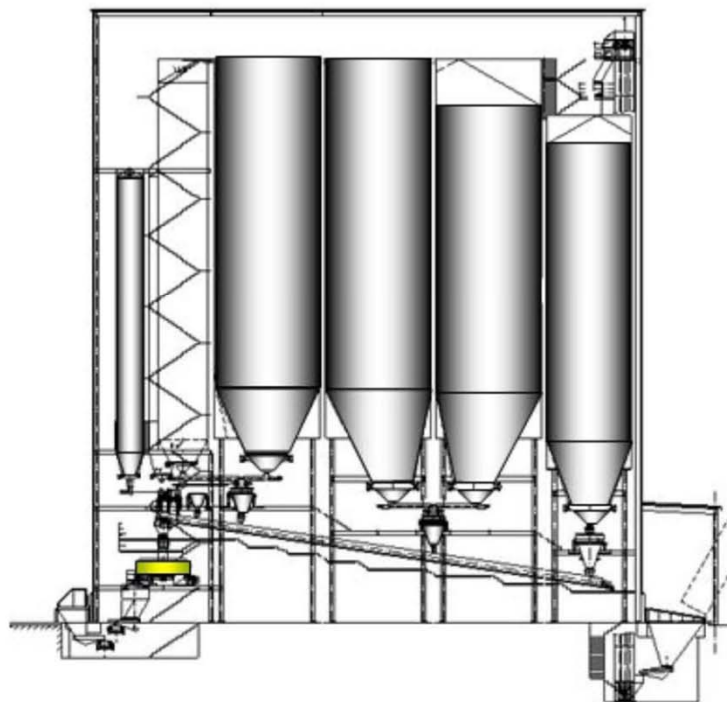


◆ Advantages:

- bigger capacity
- easy expansion
- weigh-out

◆ Disadvantages

- bigger space
- spillage by conveyor
- more equipment



Q2 - Batch Plant – in steel or concrete?



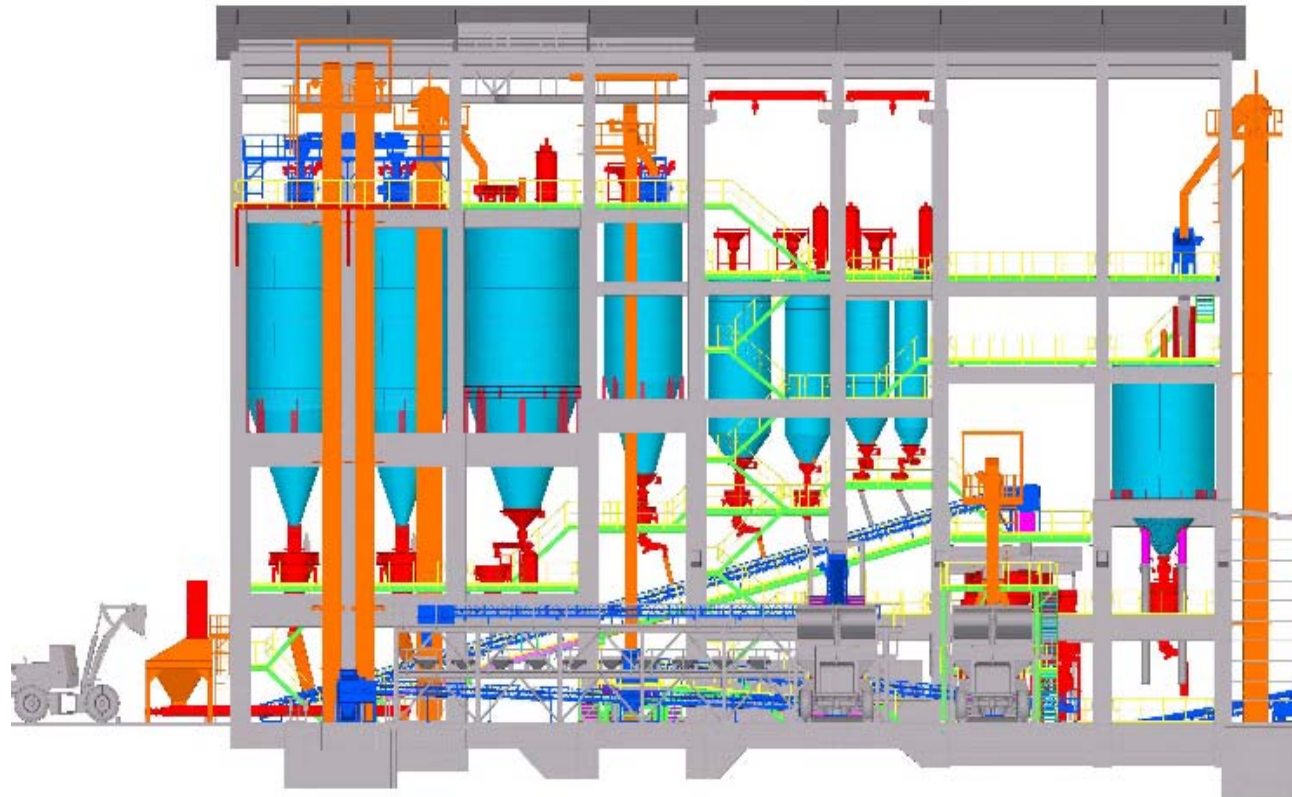
- ◆ Advantages:
 - quick & accurate
- ◆ Disadvantages
 - cost (?)



- ◆ Advantages:
 - cost (?) & robust
- ◆ Disadvantages
 - slow

Q2 - Batch Plant – in steel or concrete?

- ◆ Recommendation:
 - Concrete frame
 - Steel silos



Q3 - Batch Plant – for one or multiple furnaces?

- ◆ One furnace one batch plant
- ◆ Batch plant shall be near to the furnace as much as possible



Q4 - Batch Plant – weigh-in or weigh-out?

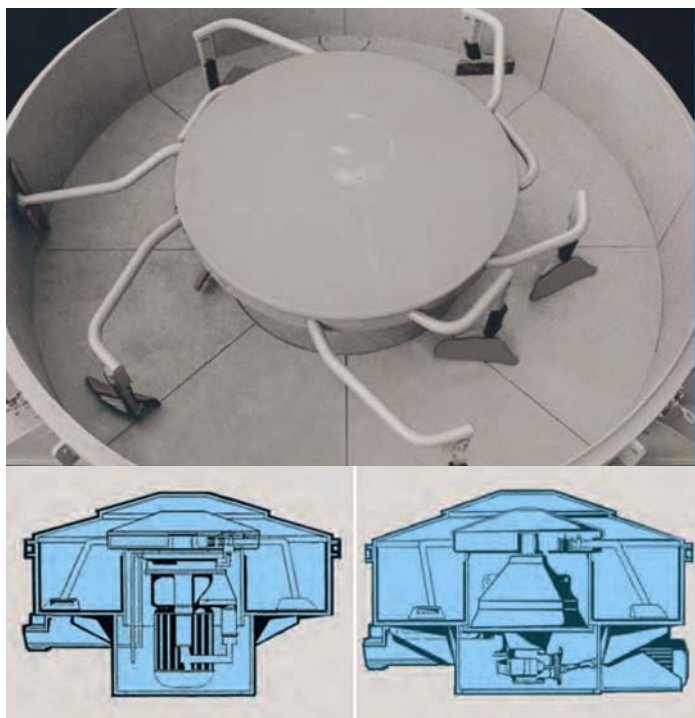


- raw materials: dry, easy to flow
- capacity: limited



- raw materials: sticky, wearable
- capacity: big

Q5 - Batch Plant – pan mixer or planetary mixer?

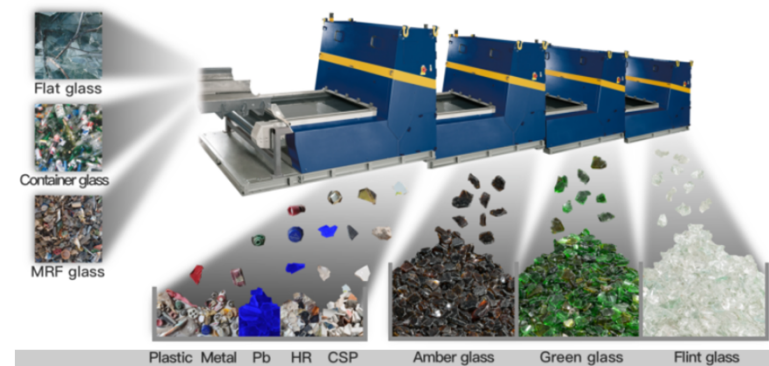


- mixing efficient
- size smaller
- maintenance easier



Shanghai Precision Dosing & Weighing Co., Ltd.

Q6 – Cullet Treatment – Sorter and Separator



Summary





Project Reference – Bottle

Hamadan Glass Iran

- 600t/d, Glass Bottle





Project Reference – Bottle

Mulia Glass Indonesia

- 300t/d, Glass Bottle





Project Reference – Bottle

Heinz Glass China

- 140t/d, Cosmetic





Project Reference – Bottle

Golden Eagle Myanmar

- 300t/d, Glass Bottle





Project Reference – Borosilica

Schott China

- 160t/d, Glass Tubing





Project Reference – Float Glass

KCC Semarang Indonesia

- 1200t/d, Float Glass





Project Reference – Glass Wool

Knauf Insulation Romania

- 200t/d, Glass Wool





Shanghai Precision Dosing and Weighing System Co., Ltd.

Thank you!

harry.sha@shpws.com

M.P. +86 139 0181 3018
(WhatsApp)

